

Visit [www.ncl.com/shore-excursions](http://www.ncl.com/shore-excursions) to see available shore excursions. Pre-book by logging in or creating an online account or by calling the Norwegian Excursion line at 866-625-1167.

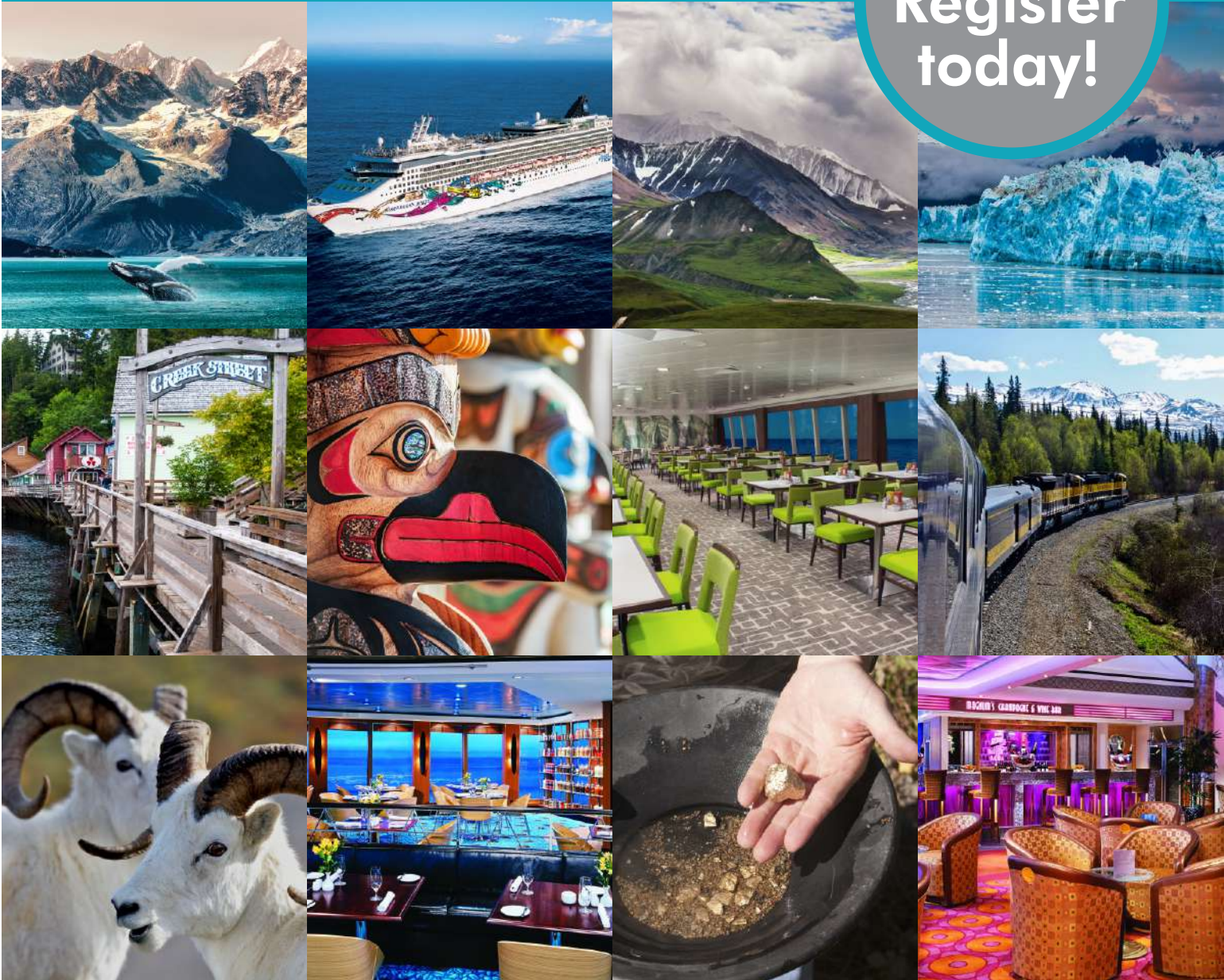


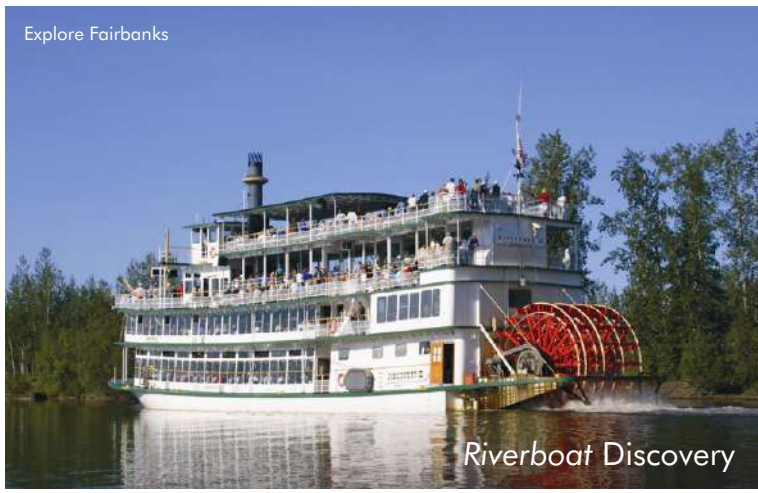
# ALASKA LAND & CRUISE

## September 5-16, 2024

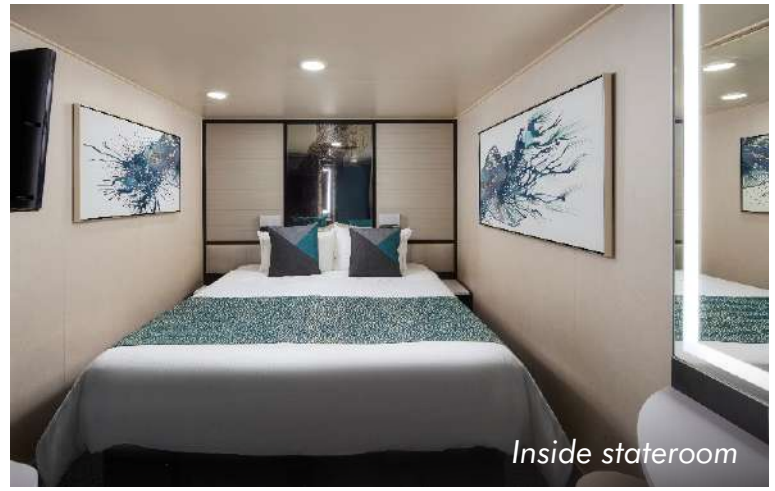
Venture to Alaska to pan for gold, ride the rails, and step into the world of dog sledding. From aboard an authentic sternwheeler to deep in the heart of Denali National Park, encounter magnificent scenery and amazing wildlife at every turn. Combined with a seven-night cruise from Seward to Vancouver on board the beautiful *Norwegian Jewel*, it is an experience few will ever have!

Space is limited.  
**Register today!**





Riverboat Discovery



Inside stateroom

**DAY 1 THURSDAY, SEPTEMBER 5****FAIRBANKS**

Today we will transfer to the airport for our flight to **Fairbanks, AK**, known as “The Golden Heart City” due to its gold rush history and welcoming people. Upon our arrival, we’ll meet our local guide and head to the **SpringHill Suites** (or similar) for a two-night stay with the remainder of the day at our leisure to settle in and enjoy dinner on our own. Fairbanks’ charming downtown, thriving arts community, and rich Alaska Native culture are all waiting to be explored!

**DAY 2 FRIDAY, SEPTEMBER 6****FAIRBANKS****(Breakfast, Dinner)**

Enjoy breakfast at the hotel before we embark on a morning **tour of Fairbanks**, which will introduce us to the area’s gold rush heritage during a visit to **Gold Daughters**. Our guide will teach us the proper gold-panning techniques and coach us as we try to strike it rich. You get to keep anything you find, including gold, Ice Age fossils, and minerals like quartz and garnets! Lunch is on our own before we **board the authentic Alaskan sternwheeler Discovery for a narrated cruise** along the great rivers of the Last Frontier. Tonight we are in for a real treat – a **delicious, Alaska-style, fresh-caught salmon bake!**

**DAY 3 SATURDAY, SEPTEMBER 7****DENALI****(Breakfast, Snack)**

This morning we will board the renowned **Alaska Railroad** for the scenic journey south to Denali National Park, home to the highest peak in North America at 20,310 feet. Founded in 1914, the railroad has a mainline over 656 miles long! Onboard hosts will captivate us with their narration and point out the many landmarks visible through the dome railcar’s large picture windows. A delicious breakfast will be enjoyed along the way. We’ll disembark the train in **Denali** and enjoy time for lunch on our own before we head into **Denali National Park on a guided tour** that will introduce us to the landscapes, geology, and abundant wildlife found here. The park encompasses six million acres of stunning forests, mountains, glaciers, and lakes with only one road interrupting the terrain! Keep your eyes peeled and you might see a shaggy grizzly sow watching over rambunctious cubs, a lone bull moose browsing in thick willows, or a rare full-curl Dall sheep bedded down high upon a craggy ridge. A snack will be provided during the tour. Our day will come to an end at the **Denali Park Village** (or similar) with the remainder of the day at our leisure.

**DAY 4 SUNDAY, SEPTEMBER 8****ANCHORAGE****(Breakfast, Lunch)**

Today’s touring will take us south to Anchorage with a stop en route at a **local musher’s kennel** to learn all about the Iditarod. Known as “The Last Great Race,” the Iditarod is an annual tradition covering a grueling 1,000 miles between Anchorage and Nome. We’ll then continue on to **Anchorage** for a brief overview tour of the city before we settle into the **Anchorage Hilton Hotel** (or similar). With the rest of the day at leisure, you can grab dinner on your own and explore the city’s unique combination of wild Alaska beauty, convenient urban comforts, mesmerizing outdoor spaces, and captivating arts and culture.

**DAY 5 MONDAY, SEPTEMBER 9****SEWARD****(Breakfast, Lunch, Dinner)**

Our adventure today will continue the southward journey on the **Seward Highway**, a National Scenic Byway widely hailed as one of the most scenic drives in Alaska. The first forty miles of the trip parallel the stunning waterway called the Turnagain Arm. Watch for wildlife and enjoy the spectacular scenery as we venture along Turnagain Arm’s shores and into the heart of the picturesque Kenai Peninsula to **Seward**. It is an alpine-like resort town on the sparkling blue waters of Resurrection Bay with towering, snow-capped mountains all around. Eagles and seabirds fill the air, and wolves, mountain goats, bears, and moose inhabit the surrounding forest. Here we’ll say goodbye to our local guide as we **board the beautiful Norwegian Jewel** and explore our home for the next seven nights.

**DAY 6 TUESDAY, SEPTEMBER 10****CRUISE HUBBARD GLACIER****(Breakfast, Lunch, Dinner)**

Get up close and personal with the gigantic **Hubbard Glacier**, North America’s largest tidewater glacier. It is 1,350 square miles of blue ice and one of the most active glaciers in Alaska! Calving occurs nearly every day, an exciting experience that sends large chunks of ice crashing into the water below.



Oceanview stateroom



Balcony stateroom

**DAY 7 WEDNESDAY, SEPTEMBER 11**

**ICY STRAIT POINT**

**(Breakfast, Lunch, Dinner)**

Venture “where the north wind doesn’t blow.” Known for this famous saying, **Icy Strait Point** is the ideal landing spot for adventurers seeking a new experience. Breathtaking and exciting, Icy Strait Point truly takes you where the wild things are. It’s one of the few places in the world where wildlife outnumbers the human population. A trip here certainly satisfies your taste for adventure. While in port, optional excursions include experiencing a traditional Tlingit tribal performance and getting up close to humpback whales and brown bears in the wild. Work up a wilderness hunger and satisfy it with fresh Dungeness crab or take in Alaska's awe-inspiring landscapes by gondola, tram, ATV, kayak, or high-speed boat.

**DAY 8 THURSDAY, SEPTEMBER 12**

**JUNEAU**

**(Breakfast, Lunch, Dinner)**

We are off to **Juneau**, which has been called “Alaska's peak experience,” certainly due in part to its unparalleled glacier viewing from such places as Tracy Arm Fjord, the Juneau Icefields, and Glacier Bay National Park. Optional excursions in Juneau include kayaking up one of the area's many protected waterways, embarking on a whale-watching adventure, feasting on salmon, touring historic downtown, or trying one’s hand at panning for gold. The majestic Mendenhall Glacier lies nearly twelve miles outside Juneau and can be experienced from both land and sea.

**DAY 9 FRIDAY, SEPTEMBER 13**

**SKAGWAY**

**(Breakfast, Lunch, Dinner)**

In a single year from 1896 to 1897, the remote town of **Skagway** along the Inside Passage grew from a few tents to a city of 20,000 gold seekers. Today, travelers come in search of other riches – to experience yesteryear along Skagway's charming boardwalk lined with buildings that replicate those Gold Rush days. Excursion options include a scenic ride on a vintage train to the summit of White Pass, a dog sledding adventure with the chance to cuddle husky puppies, or panning for gold like the prospectors in the Klondike Gold Rush. The scenery around Skagway is absolutely gorgeous, and there are so many ways to get out and soak it all in! For the more adventurous, hiking, glacier flightseeing, wilderness safaris, rafting, horseback riding, and ziplining are all great options to consider.

**DAY 10 SATURDAY, SEPTEMBER 14**

**KETCHIKAN (WARD COVE)**

**(Breakfast, Lunch, Dinner)**

Its Tlingit Indian name, Kach Khanna, means “spread wings of the eagle.” Chances are you'll see one of these magnificent birds perched atop a Sitka tree. Thanks to its abundant rainfall, **Ketchikan** is surrounded by some of the world's most lush wilderness. An introduction to the rich culture of Southeast Alaska’s Native Americans and a glimpse at their awe-inspiring totem poles is an experience worth considering. Other optional excursions include flightseeing, crab feasts, a lumberjack show, and salmon or halibut fishing. Plus, there’s an opportunity to watch the fishing action aboard the *Aleutian Ballad* from *The Deadliest Catch*!

**DAY 11 SUNDAY, SEPTEMBER 15**

**CRUISE INSIDE PASSAGE**

**(Breakfast, Lunch, Dinner)**

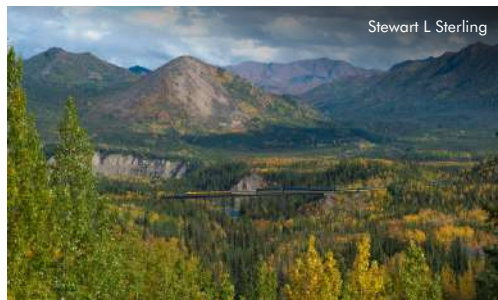
Get ready for amazing views and wildlife like nowhere else as we sail through the islands of **Alaska's Inside Passage**.

**DAY 12 MONDAY, SEPTEMBER 16**

**HOME**

**(Breakfast)**

Following breakfast we will disembark in Vancouver, BC, and transfer to the airport for our flight home.



# INCLUSIONS

- Round-Trip Airport Transfers
  - Round-Trip Air to Anchorage & Return From Vancouver (air allowance of \$900)
  - Private Motorcoach Transportation on Land Tour & to Pier/Airport
  - 4 Nights' Accommodations on Land
  - 7-Night Cruise in Stateroom Category of Choice
  - 6 Meals on Land & All Meals on Board
  - Admission to Attractions as Stated on Itinerary
  - Taxes & Gratuities for Included Services on Land & Cruise
  - Porter Service of One Bag Per Person at Hotels
  - Local Guide in Alaska on Land Tour
  - Balcony & Oceanview Guests Pick One Amenities Package
- PACKAGE 1:
- Premium Beverage Package (Includes drinks up to \$15 each; excludes \$138.60/person gratuities)
  - Ultimate Dining Package (2 nights' dining in specialty restaurants; excludes \$15.80/person gratuities)
  - 250-Minute Internet Package (Per stateroom)
  - \$50 Shore Excursion Credit (Per stateroom, per port)
- PACKAGE 2:
- \$50 Shore Excursion Credit (Per stateroom, per port)
  - 250-Minute Internet Package (Per stateroom)
  - 10-Photo Package (Per stateroom)
  - \$100 Onboard Credit (Per stateroom)
- Inside Guests Pick Two Amenities From One of the Above Packages

**Not included in the price of this tour:** Meals other than those listed on the itinerary, beverages other than tea/coffee/water with included meals on land and in ship restaurants only (unless onboard beverage package is chosen), onboard drinks over \$15 each, onboard beverage and dining package gratuities, items of a personal nature/souvenirs, personal services on board such as spa or hair-styling, shore excursions, excursion driver/guide gratuities, phone calls and taxes from hotels/ship, travel protection plan, passport fees, visa fees (if applicable), fees related to any COVID-19 requirements for this destination, current baggage fees at the airport as assessed by the airline, and any service not listed in the above inclusions.

## Activity Level: Moderate

In order to participate in this tour, **you must:**

- Be able to walk/stand 3-4 hours at a time at an easy pace in all weather conditions
- Be able to regularly maneuver stairs, inclines, and uneven surfaces without assistance



**DOCUMENTATION:** Each U.S. citizen must have a valid passport through December 16, 2024, to participate. If you don't have a passport, call our office and we'll tell you how to apply for one. Holders of non-U.S. passports have different entry requirements. Please NOTE: Due to airline security measures, your passport name must match your airline ticket name and your tour reservation name or you may be denied aircraft boarding.

**OPTIONAL TRAVEL PROTECTION PLAN:** Primebank recommends that you purchase a Travel Protection Plan to help protect you and your travel investment against the unexpected so you can relax and enjoy your trip. Participants may purchase this coverage from the provider of your choice. For your convenience, we offer a Travel Protection Plan, 360° Group Premier provided by Travellex Insurance Services, that helps provide coverage for trip cancellation/interruption, trip delay, baggage loss, theft or damage, medical expense and emergency evacuation coverage, and more. For more information, please see the product flyer included with this brochure. If you would like to purchase the offered plan, please check the applicable box on the registration form. Please Note: The plan cannot be purchased after final payment. To view/download the Policy, which provides the full coverage terms and details, including limitations and exclusions, go to: <https://policy.travelexinsurance.com/GPZ-1023>. To view state specific fraud warnings, visit: <https://www.travelexinsurance.com/company/fraud-warning>. The purchase of this product is not required in order to purchase any other travel product or service. Your travel retailer might not be licensed to sell travel insurance and will only be able to provide general information about the product. An unlicensed travel retailer may not answer questions about the terms and conditions of the insurance offered and may not evaluate the adequacy of your existing insurance coverage. The products being offered provide insurance coverage that only applies during your covered trip. You may have insurance coverage from other sources that provide similar benefits but may be subject to different restrictions depending upon the coverage. You may wish to compare the terms of the travel policy offered through Travellex with any existing life, health, home, and automobile insurance policies you may have. If you have questions about your coverage under your existing insurance policies, contact your insurer or insurance agent or broker. Travellex Insurance Services, Inc. CA Agency License #0D10209. Travel Insurance is offered on behalf of and under the direction of Travellex Insurance Services. Insurance coverages underwritten by individual member companies of Zurich in North America, including Zurich American Insurance Company (NAIC # 16535).

**CANCELLATION:** Full refund of all monies is made if cancellation is received in writing to Primebank prior to final payment. A 100% fee is charged if the cancellation occurs between final payment and departure. If the reason for cancellation is due to a medical or other reason that is covered by Travel Protection, you may be eligible for reimbursement for such fees from your Travel Protection Plan provider.

**TRAVELERS WITH SPECIAL NEEDS:** You must advise Star Destinations, Inc. (SDI) at the time of registration of any disability requiring special attention. SDI will make reasonable efforts to accommodate the special needs of travelers. The Americans with Disabilities Act is applicable only in the U.S., and accommodations outside the U.S. may be more limited. Travelers requiring assistance are required to be accompanied by a companion who is capable of, and totally responsible for, providing the assistance. Neither SDI personnel nor its suppliers may lift or physically assist with travelers' special needs including, but not limited to, walking, dining, or other routine activities. Travelers thinking they may need assistance should call SDI to determine what accommodations may reasonably be provided. Arrangements at an additional cost are the financial responsibility of the traveler.

**TERMS & CONDITIONS:** Star Destinations, Inc. (SDI) acts as an agent for suppliers such as airlines, hotels or activities to provide you with the travel services and accommodations. Although great care is taken in choosing suppliers, we are unable to control them and therefore cannot be held responsible or liable for their acts or omissions. Should a contracted supplier be unable to perform required services, SDI reserves the right to substitute advertised services with similar services. SDI is not responsible for any claims, losses, damages, costs or expenses arising out of injury, accident or death, damage, loss, trip delay or delay of baggage, or other inconvenience resulting from mechanical breakdowns, fire, theft, civil disturbances, government actions, weather, and other factors beyond our control. In the case of a pandemic or worldwide disturbance that interrupts or cancels your planned tour, SDI will do everything possible to retrieve any refundable components of your tour but cannot be held responsible for any non-refundable portions of the tour. In addition, SDI reserves the right to vary the tour price advertised or printed to cover any increase in air fare, volatile fuel prices, government taxes and charges, exchange rate fluctuations, or other tour-related tariffs or newly announced travel costs. In the current travel environment, pricing may be increased due to unexpected requirements for health and safety of tour members. Due to infectious diseases, including COVID-19, destination areas may implement restrictions and requirements that may add additional costs beyond our control. Be aware that any public interaction carries a risk of exposure to infectious diseases. Travelers assume personal risk upon tour registration, and SDI cannot be held responsible in the event of infectious disease exposure. If you request a variation or change to your booking, SDI may choose to accept or reject that request. If accepted, you are responsible for any fees associated with it. If the minimum number of passengers required to operate the tour is not met, SDI reserves the right to cancel the tour.

It is the sole discretion of SDI to refuse transport to any passenger, or require any passenger to leave the tour, if it is reasonably believed that the passenger (1) is dangerous to others or to himself or herself; (2) is engaged in, or is threatening to engage in behavior that may adversely affect the safety, security, enjoyment, or well-being of other passengers, including behavior that is disruptive, verbally or physically abusive, obnoxious, harassing, or obscene; or (3) has failed or refused to follow SDI's rules and procedures or the instructions of its representatives. In the event a passenger is removed, such passenger may be left at any location without any liability to SDI or its representatives. SDI shall not be required to refund any portion of the price paid by any passenger who is removed, nor shall SDI be responsible for any further expenses incurred by the passenger. SDI shall be entitled to recover from the passenger any costs or expenses incurred by SDI or its representatives in the removal of the passenger or the exercise or enforcement of this clause.

# TOUR PRICING

Per Person  
Double Occupancy

(10 available)	<b>Cat. IA</b>	Inside Stateroom (138-278 sq ft)*	<b>\$5,295</b>
(10 available)	<b>Cat. OA</b>	Oceanview Stateroom (138-161 sq ft)*	<b>\$5,585</b>
(19 available)	<b>Cat. BA</b>	Balcony Stateroom (200-289 sq ft)*	<b>\$5,999</b>

\*Staterooms subject to availability at time of registration.  
Single pricing available upon request.

## OPTIONAL TRAVEL PROTECTION

Primebank RECOMMENDS all travelers purchase a Travel Protection Plan. For your convenience, we offer a Travel Protection Plan provided by Travellex Insurance Services.

See the included Travellex Insurance Services flyer for pricing. (Payment may be sent with your deposit or with final payment to Primebank)

Travel Protection Plan may be purchased any time before or with final payment to Primebank.

Travel Insurance is underwritten by Zurich American Insurance Company, (NAIC #16535). Any person who knowingly presents a false or fraudulent claim for payment of a loss or benefit or knowingly presents false information in an application for insurance is guilty of a crime and may be subject to fines and confinement in prison. To view state specific fraud warnings, visit: <https://www.travelexinsurance.com/company/fraud-warning>. Travellex Insurance Services Inc. ("Travellex Insurance") maintains an updated list of alerts and financial defaults on its website available at <https://www.travelexinsurance.com/customer-service/travel-alerts/travel-subscriber>.

Travellex Insurance Services, Inc. CA Agency License #0D10209. Insurance coverages underwritten by individual member companies of Zurich in North America, including Zurich American Insurance Company (NAIC # 16535).

**\*\* If choosing the beverage and/or dining package, gratuities are due at final payment \*\***

A \$500 deposit per person is required with your registration form in order to reserve your spot:

**FINAL PAYMENT IS DUE:  
JANUARY 5, 2024**

For further information or questions, please contact:

**Debra VanDenBerg**  
**Primebank Good Neighbors Club Director**  
**(712) 541-6241**  
**debra.vandenberg@primebank.com**

# NORWEGIAN JEWEL®



Refurbished: 2022 • Built: 2005 • Gross Tonnage: 93,502 • Guests (Double Occupancy): 2,376 • Overall Length: 965 feet • Max Beam: 125 feet • Crew: 1,069

## SHIP HIGHLIGHTS



### The Haven By Norwegian®

The Haven is an exclusive enclave accessible by private keycard with our most luxurious and well-appointed accommodations.



### Mandara Spa®

Revive, refresh and recharge in a spa that is remarkable. Start with a hot-stone massage, one of over 50 specialty treatments offered by our well-trained massage therapists.



### Bliss Ultra Lounge

Cruise into the clubbing scene at Bliss. Dance to a different beat and feel the excitement as you walk through the lit tunnel to the illuminated bar. It's electric.

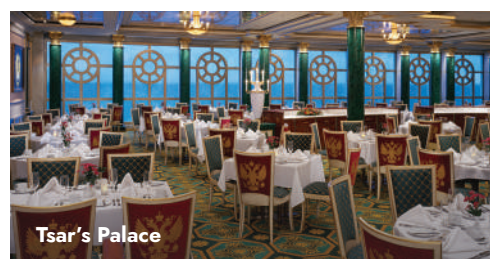
## COMPLIMENTARY DINING

### Azura

Experience a different culinary adventure with every visit to this Main Dining Room, offering a wide variety of cuisine, a menu that changes daily, Chef's Signature Dishes and carefully selected wine recommendations. Seating capacity 231

### Tsar's Palace

Balancing classic favorites with unique new dishes, dining at this Main Dining Room is a must. Offering guests an extensive menu of deliciously fresh flavors. Seating capacity 458



Tsar's Palace

### O'Sheehan's Neighborhood Bar & Grill

Casual dining to suit every taste, from salads to burgers to daily dinner specials like prime rib — open 24/7. Seating capacity 196

### Garden Café

Whatever you're craving, chances are you'll find it at the Garden Café. This complimentary, indoor buffet-style restaurant serves up breakfast, lunch and dinner — and the floor-to-ceiling windows provide picturesque ocean views. Seating capacity 406

### The Great Outdoors

This spacious outdoor buffet offers outstanding ocean views and has all your favorites, from burgers and fries to chicken, all made to order. Seating capacity 206

### Topsiders Bar & Grill

Enjoy your favorites at Topsiders where made-to-order favorites are grilled just the way you like. Seating capacity 216

### Chin Chin

Enjoy an Asian fusion menu featuring freshly prepared noodles, delicious wok-fried dishes, authentic soups and more. Seating capacity 80



Chin Chin

## SPECIALTY DINING & TREATS

### Cagney's Steakhouse

An authentic American steakhouse where choice cuts of Angus Beef® are perfectly prepared. Seating capacity 106

### La Cucina

Buona sera! Enjoy the freshest ingredients and dine on classics from Italy like osso buco or seafood fettuccine. Seating capacity 92

### Teppanyaki

Sit at a lively shared table as a skillful chef perfectly prepares Japanese hibachi shrimp, steak, chicken and fried rice on a large steel grill. Seating capacity 32

### Moderno Churrascaria

A Brazilian steakhouse boasting an impressive salad bar, cured meats and cheeses. Be sure to save room for skewers of slow-roasted meats carved tableside by our pasadores. Seating capacity 106

### Le Bistro

French cuisine at its finest. Surround yourself in classic décor and plates of rich cuisine such as escargot, bouillabaisse and coq au vin. Seating capacity 106

### Sushi

If you're in the mood for sushi, pull up a stool at this contemporary sushi, sashimi and yakitori bar for traditional Japanese bites. Seating capacity 10

### Atrium Café & Bar with The Bake Shop Treats

A morning and late-night favorite place to relax, enjoy your coffee with a treat from The Bake Shop, grab a beer, sip a glass of wine or your favorite drink amid the hustle and bustle of the Atrium.

## ENTERTAINMENT / BARS & LOUNGES

### Rock You Tonight

Take a walk on the wild side in tonight's production of Rock You Tonight! The high-energy grooves of our Jewel Production Cast combines with the rocking sounds of the Norwegian Jewel Showband to bring you an athletic explosion of dance that leaps off the stage to rock icons Queen, Journey, and The Who.

### Velvet

Ready to "Turn the Beat Around"? Then slip behind the red velvet rope to relive the music and glamour of the sexy disco era. Showcasing a stellar array of circus acrobatics, Velvet will have you off your seat with excitement singing along with fabulous disco divas, and boogying to groovy hits like "Enough is Enough" and "Last Dance."

### Deal or No Deal

Just like the popular television game show, *Deal or No Deal*, contestants along with the audience try to beat the banker for exciting prizes.

### Stardust Theater

You're invited for an evening of laughter and entertainment in the Stardust Theater. Seating capacity 996  
*Seating capacities subject to change.*



Stardust Theater

### Atrium Cafe & Bar

You'll love the people-watching at this great casual hangout located in the beautiful Atrium. Seating capacity 59

### O'Sheehan's Neighborhood Bar & Grill

Try a few of the many beers on tap, catch a game on the two-story TV screen or play some billiards or darts. Seating capacity 196.



O'Sheehan's Neighborhood Bar & Grill

### Bliss Ultra Lounge

Cruise into the clubbing scene at Bliss. Dance to a different beat and feel the excitement as you walk through the lit tunnel to the illuminated bar. It's electric. Seating capacity 85

### Magnum's Champagne & Wine Bar

Sip your favorite champagne and wine in this upscale lounge. Seating capacity 68

### Sugarcane Mojito Bar

Savor a delicious handcrafted mojito freshly muddled just the way you like. Seating capacity 16

### Shaker's Martini & Cocktail Bar

Happy hour comes shaken or stirred at this classic martini bar with a twist. Join the martini crowd for a cosmopolitan ambience. Seating capacity 45

### Topside's Bar & Grill

A full-service bar located at the Oasis Pool, perfect for working on your tan while sipping your favorite drink. Seating capacity 216

### Malting's Beer & Whiskey Bar

With a unique variety of international spirits and an impressive list of imported and domestic beers, you can sip your way around the world. Seating capacity 42

### The Great Outdoors Bar

Sip on a refreshing beer at this bustling open-air buffet.



The Great Outdoors Bar

### Spinnaker Lounge

Meet up with friends for cocktails or step onto the dance floor at this popular bar and lounge. Seating capacity 291



Spinnaker Lounge

### Sake Bar

Enjoy this full-service bar offering premium sake and imported beer.

## ACTIVITIES FOR KIDS

### Splash Academy

Kids will have a blast at our complimentary youth program, where they can enjoy creative play, themed activities, sports and more. Supervised Group Sitting\* is available on port days or in the evening.

*\*Nominal fee applies.*

### Video Arcade

Stop by and capture a few aliens, win a car race, play pinball and fly a jet fighter. Let your imagination run wild at the Video Arcade.

### Kids' Pool

They'll splash. They'll splash. Kids will have the best of times at the Kids' Pool.

# ALASKA LAND & CRUISE



For further information or questions, please contact:  
**Debra VanDenBerg**  
**Primebank Good Neighbors Club Director**  
**(712) 541-6241**  
**debra.vandenberg@primebank.com**

Travel arrangements  
provided by



**September 5-16, 2024**

**PASSENGER INFORMATION (1st Traveler)**  
*Full name must be exactly as it appears on your passport or passport application. Passport information may be sent later if you have yet to obtain a passport.*

First Name: \_\_\_\_\_

Middle Name(s): \_\_\_\_\_

Last Name(s): \_\_\_\_\_

Preferred Name: \_\_\_\_\_ Gender (circle one): M F

Address: \_\_\_\_\_

City: \_\_\_\_\_ State: \_\_\_\_\_ Zip: \_\_\_\_\_

Preferred Phone: \_\_\_\_\_

Email: \_\_\_\_\_

Passport #: \_\_\_\_\_

Passport Expiration Date: \_\_\_\_ / \_\_\_\_ / \_\_\_\_  
month / day / year

Date of Birth: \_\_\_\_ / \_\_\_\_ / \_\_\_\_  
month / day / year

Dietary Needs: \_\_\_\_\_

Additional Special Requests/Needs: \_\_\_\_\_

Emergency Contact: \_\_\_\_\_

Relationship: \_\_\_\_\_

Emergency Contact's Phone: \_\_\_\_\_

**PASSENGER INFORMATION (2nd Traveler)**  
*Full name must be exactly as it appears on your passport or passport application. Passport information may be sent later if you have yet to obtain a passport.*

First Name: \_\_\_\_\_

Middle Name(s): \_\_\_\_\_

Last Name(s): \_\_\_\_\_

Preferred Name: \_\_\_\_\_ Gender (circle one): M F

Address: \_\_\_\_\_

City: \_\_\_\_\_ State: \_\_\_\_\_ Zip: \_\_\_\_\_

Preferred Phone: \_\_\_\_\_

Email: \_\_\_\_\_

Passport #: \_\_\_\_\_

Passport Expiration Date: \_\_\_\_ / \_\_\_\_ / \_\_\_\_  
month / day / year

Date of Birth: \_\_\_\_ / \_\_\_\_ / \_\_\_\_  
month / day / year

Dietary Needs: \_\_\_\_\_

Additional Special Requests/Needs: \_\_\_\_\_

Emergency Contact: \_\_\_\_\_

Relationship: \_\_\_\_\_

Emergency Contact's Phone: \_\_\_\_\_

**Primebank RECOMMENDS all travelers purchase a Travel Protection Plan. For your convenience, we offer a Travel Protection Plan provided by Travelex Insurance Services.**

**Yes, I would like to purchase the offered plan.**  
 See the included Travelex Insurance Services flyer for pricing.  
 (Payment may be sent with your deposit or with final payment to Primebank)

**No, I decline the offered plan.**

(Double Occupancy)  
**Trip Costs Per Person**

Please choose a stateroom:

**Cat. IA** Inside Stateroom (138-278 sq ft - 10 available)\* **\$5,295**

**Cat. OA** Oceanview Stateroom (138-161 sq ft - 10 available)\* **\$5,585**

**Cat. BA** Balcony Stateroom (200-289 sq ft - 19 available)\* **\$5,999**

\*Staterooms subject to availability at time of registration.  
Single pricing available upon request.

Travel Insurance is underwritten by Zurich American Insurance Company, (NAIC #16535). Any person who knowingly presents a false or fraudulent claim for payment of a loss or benefit or knowingly presents false information in an application for insurance is guilty of a crime and may be subject to fines and confinement in prison. To view state specific fraud warnings, visit: <https://www.travelexinsurance.com/company/fraud-warning>. Travelex Insurance Services Inc. ("Travelex Insurance") maintains an updated list of alerts and financial defaults on its website available at <https://www.travelexinsurance.com/customer-service/travel-alerts/travel-supplier>.

Travelex Insurance Services, Inc. CA Agency License #0D10209. Insurance coverages underwritten by individual member companies of Zurich in North America, including Zurich American Insurance Company (NAIC # 16535).

Sleeping Preference (circle one): Two Beds One Bed

Roommate (name): \_\_\_\_\_

**\* A Travel Protection Plan may be purchased any time before or with final payment to Primebank \***

**PLEASE TURN OVER FOR SIGNATURE**

# ALASKA LAND & CRUISE

**DOCUMENTATION:** Each U.S. citizen must have a valid passport through December 16, 2024, to participate. If you don't have a passport, call our office and we'll tell you how to apply for one. Holders of non-U.S. passports have different entry requirements. Please NOTE: Due to airline security measures, your passport name must match your airline ticket name and your tour reservation name or you may be denied aircraft boarding.

**OPTIONAL TRAVEL PROTECTION PLAN:** Primebank recommends that you purchase a Travel Protection Plan to help protect you and your travel investment against the unexpected so you can relax and enjoy your trip. Participants may purchase this coverage from the provider of your choice. For your convenience, we offer a Travel Protection Plan, 360° Group Premier provided by Travel Insurance Services, that helps provide coverage for trip cancellation/interruption, trip delay, baggage loss, theft or damage, medical expense and emergency evacuation coverage, and more. For more information, please see the product flyer included with this brochure. If you would like to purchase the offered plan, please check the applicable box on the registration form. Please Note: The plan cannot be purchased after final payment. To view/download the Policy, which provides the full coverage terms and details, including limitations and exclusions, go to: <https://policy.travelexinsurance.com/GPZ-1023>. To view state specific fraud warnings, visit: <https://www.travelexinsurance.com/company/fraud-warning>. The purchase of this product is not required in order to purchase any other travel product or service. Your travel retailer might not be licensed to sell travel insurance and will only be able to provide general information about the product. An unlicensed travel retailer may not answer questions about the terms and conditions of the insurance offered and may not evaluate the adequacy of your existing insurance coverage. The products being offered provide insurance coverage that only applies during your covered trip. You may have insurance coverage from other sources that provide similar benefits but may be subject to different restrictions depending upon the coverage. You may wish to compare the terms of the travel policy offered through Travelex with any existing life, health, home, and automobile insurance policies you may have. If you have questions about your coverage under your existing insurance policies, contact your insurer or insurance agent or broker. Travelex Insurance Services, Inc. CA Agency License #0D10209. Travel Insurance is offered on behalf of and under the direction of Travelex Insurance Services. Insurance coverages underwritten by individual member companies of Zurich in North America, including Zurich American Insurance Company (NAIC # 16535).

**CANCELLATION:** Full refund of all monies is made if cancellation is received in writing to Primebank prior to final payment. A 100% fee is charged if the cancellation occurs between final payment and departure. If the reason for cancellation is due to a medical or other reason that is covered by Travel Protection, you may be eligible for reimbursement for such fees from your Travel Protection Plan provider.

**TRAVELERS WITH SPECIAL NEEDS:** You must advise Star Destinations, Inc. (SDI) at the time of registration of any disability requiring special attention. SDI will make reasonable efforts to accommodate the special needs of travelers. The Americans with Disabilities Act is applicable only in the U.S., and accommodations outside the U.S. may be more limited. Travelers requiring assistance are required to be accompanied by a companion who is capable of, and totally responsible for, providing the assistance. Neither SDI personnel nor its suppliers may lift or physically assist with travelers' special needs including, but not limited to, walking, dining, or other routine activities. Travelers thinking they may need assistance should call SDI to determine what accommodations may reasonably be provided. Arrangements at an additional cost are the financial responsibility of the traveler.

**TERMS & CONDITIONS:** Star Destinations, Inc. (SDI) acts as an agent for suppliers such as airlines, hotels or activities to provide you with the travel services and accommodations. Although great care is taken in choosing suppliers, we are unable to control them and therefore cannot be held responsible or liable for their acts or omissions. Should a contracted supplier be unable to perform required services, SDI reserves the right to substitute advertised services with similar services. SDI is not responsible for any claims, losses, damages, costs or expenses arising out of injury, accident or death, damage, loss, trip delay or delay of baggage, or other inconvenience resulting from mechanical breakdowns, fire, theft, civil disturbances, government actions, weather, and other factors beyond our control. In the case of a pandemic or worldwide disturbance that interrupts or cancels your planned tour, SDI will do everything possible to retrieve any refundable components of your tour but cannot be held responsible for any non-refundable portions of the tour. In addition, SDI reserves the right to vary the tour price advertised or printed to cover any increase in air fare, volatile fuel prices, government taxes and charges, exchange rate fluctuations, or other tour-related tariffs or newly announced travel costs. In the current travel environment, pricing may be increased due to unexpected requirements for health and safety of tour members. Due to infectious diseases, including COVID-19, destination areas may implement restrictions and requirements that may add additional costs beyond our control. Be aware that any public interaction carries a risk of exposure to infectious diseases. Travelers assume personal risk upon tour registration, and SDI cannot be held responsible in the event of infectious disease exposure. If you request a variation or change to your booking, SDI may choose to accept or reject that request. If accepted, you are responsible for any fees associated with it. If the minimum number of passengers required to operate the tour is not met, SDI reserves the right to cancel the tour.

It is the sole discretion of SDI to refuse transport to any passenger, or require any passenger to leave the tour, if it is reasonably believed that the passenger (1) is dangerous to others or to himself or herself; (2) is engaged in, or is threatening to engage in behavior that may adversely affect the safety, security, enjoyment, or well-being of other passengers, including behavior that is disruptive, verbally or physically abusive, obnoxious, harassing, or obscene; or (3) has failed or refused to follow SDI's rules and procedures or the instructions of its representatives. In the event a passenger is removed, such passenger may be left at any location without any liability to SDI or its representatives. SDI shall not be required to refund any portion of the price paid by any passenger who is removed, nor shall SDI be responsible for any further expenses incurred by the passenger. SDI shall be entitled to recover from the passenger any costs or expenses incurred by SDI or its representatives in the removal of the passenger or the exercise or enforcement of this clause.

**A \$500 deposit per person is required with your registration form in order to reserve your spot.**

**FINAL PAYMENT IS DUE: JANUARY 5, 2024**

**A passport photocopy is required with registration or as soon as possible.**

**DEPOSIT PAYMENT INFORMATION:**

Enclosed is my check, made payable to:

Primebank Good Neighbors Club

In the amount of: \_\_\_\_\_

Mail Check to: Primebank Good Neighbors Club  
PO Box 1408, Le Mars, IA 51031

**Balcony & Oceanview Guests:** Select all four options in ONE column  
**Inside Guests:** Select two options in ONE column

**Package 1:**

- Premium Beverage Package**  
*(Excludes \$138.60/person gratuities)*
- Ultimate Dining Package**  
*(2 nights' dining in specialty restaurants; excludes \$15.80/person gratuities)*
- 250-Minute Internet Package**  
*(Per stateroom)*
- \$50 Shore Excursion Credit**  
*(Per stateroom, per port)*

**Package 2:**

- \$50 Shore Excursion Credit**  
*(Per stateroom, per port)*
- 250-Minute Internet Package**  
*(Per stateroom)*
- 10-Photo Package**  
*(Per stateroom)*
- \$100 Onboard Credit**  
*(Per stateroom)*

**\*\* If choosing the beverage and/or dining package, gratuities are due at final payment \*\***

**Activity Level: Moderate**

In order to participate in this tour, **you must:**

- Be able to walk/stand 3-4 hours at a time at an easy pace in all weather conditions
- Be able to regularly maneuver stairs, inclines, and uneven surfaces without assistance

By registering for this tour and signing below, **you acknowledge that Primebank reserves the right to refuse transport at any time to any passenger who does not meet the activity level requirements.** Neither Primebank nor Star Destinations will be required to refund any portion of the price paid by any passenger who is removed in enforcement of this clause.

**Signature (1st Traveler):** \_\_\_\_\_

**Date:** \_\_\_\_\_

Please initial to indicate you have read/agree to the terms and conditions: \_\_\_\_\_

Have you cruised with NCL in the past?  YES  NO

If yes, please include your Latitudes Rewards number (if known): \_\_\_\_\_

**Signature (2nd Traveler):** \_\_\_\_\_

**Date:** \_\_\_\_\_

Please initial to indicate you have read/agree to the terms and conditions: \_\_\_\_\_

Have you cruised with NCL in the past?  YES  NO

If yes, please include your Latitudes Rewards number (if known): \_\_\_\_\_

By registering for this trip, I agree to grant to Star Destinations and its authorized representatives permission to record on photography film and/or video, pictures of my participation. I further agree that any or all of the material photographed may be used, in any form, as part of any future publications, brochure, or other printed or digital materials used to promote Star Destinations, and further that such use shall be without payment of fees, royalties, special credit or other compensation.





Group tours are an exciting way to explore the world, and a Travelex travel protection plan can help ensure that you stay safe during your next tour. Our 360° Group Premier plan provides maximum travel protection for all ages at competitive group rates. Benefits include trip cancellation and interruption, emergency medical coverage, and 24/7 travel assistance services.



## 360° Group Premier | Group Travel Protection

### Plan highlights

- Trip cancellation/interruption benefit includes:
  - Sickness, injury, or death<sup>1</sup>
  - Inclement weather & natural disasters
  - Financial insolvency<sup>2</sup> & labor strike
  - Involuntary unemployment
- Primary coverage, no deductibles<sup>3</sup>
- Medical evacuation
- 5-hour travel delay benefit
- 3-hour missed connection benefit
- 12-hour baggage delay benefit
- Fast online claims<sup>4</sup>

### 360° Group Premier plan rates by trip cost and age<sup>3</sup>

Trip cost	0-59	60-74	75+
\$0	\$36	\$47	\$64
\$1 - \$250	\$44	\$58	\$81
\$251 - \$500	\$57	\$74	\$105
\$501 - \$1,000	\$86	\$114	\$168
\$1,001 - \$1,500	\$109	\$143	\$211
\$1,501 - \$2,000	\$149	\$191	\$215
\$2,001 - \$2,500	\$191	\$245	\$277
\$2,501 - \$3,000	\$234	\$300	\$338
\$3,001 - \$3,500	\$276	\$354	\$400
\$3,501 - \$4,000	\$319	\$409	\$461
\$4,001 - \$4,500	\$361	\$463	\$523
\$4,501 - \$5,000	\$404	\$518	\$584
\$5,001 - \$5,500	\$446	\$572	\$646
\$5,501 - \$6,000	\$489	\$627	\$707
\$6,001 - \$6,500	\$531	\$681	\$769
\$6,501 - \$7,000	\$574	\$736	\$830
\$7,001 - \$8,000	\$638	\$818	\$923
\$8,001 - \$9,000	\$723	\$927	\$1,046
\$9,001 - \$10,000	\$808	\$1,036	\$1,169
\$10,001 - \$11,000	\$893	\$1,145	\$1,292
\$11,001 - \$12,000	\$978	\$1,254	\$1,415
\$12,001 - \$13,000	\$1,063	\$1,363	\$1,538
\$13,001 - \$14,000	\$1,148	\$1,472	\$1,661
\$14,001 - \$15,000	\$1,233	\$1,581	\$1,784
\$15,001 - \$16,000	\$1,318	\$1,690	\$1,907
\$16,001 - \$17,000	\$1,403	\$1,799	\$2,030
\$17,001 - \$18,000	\$1,488	\$1,908	\$2,153
\$18,001 - \$19,000	\$1,573	\$2,017	\$2,276
\$19,001 - \$20,000	\$1,658	\$2,126	\$2,399

### 360° Group Premier plan benefits<sup>3</sup>

Benefits	Coverage
Trip cancellation	100% of trip cost (up to \$20,000)
Trip interruption	150% of trip cost (up to \$30,000)
Trip interruption—return air only <sup>5</sup>	\$1,000
Travel delay	\$1,000 (\$250/day)
Missed connection	\$1,000
Baggage & personal effects	\$1,500
Sporting equipment delay <sup>3</sup>	\$600
Baggage delay	\$250
Emergency medical expenses <sup>6</sup>	\$50,000
Emergency dental expenses <sup>6</sup>	\$500
Emergency evacuation & repatriation	\$250,000
Accidental death & dismemberment	\$10,000
Travel assistance services <sup>7</sup>	Included

<sup>1</sup>Of you, a traveling companion, family member, or business partner. <sup>2</sup>Coverage when plan is purchased at or before the final trip payment. <sup>3</sup>All coverage per insured up to the limits listed. Pre-existing medical conditions waiver may vary by state. Coverages may vary and may not be available in all states. Please see the policy for details, or call +1.888.574.7026. Rates are subject to change. <sup>4</sup>Based on industry average. Fastest payment on approved claims is based on electronic payment of claim. <sup>5</sup>Coverage for trip interruption and trip interruption—return air only cannot be combined. <sup>6</sup>\$50 deductible in CT, IN, KS, MO, MT, VT, and WA. <sup>7</sup>Provided by the designated provider listed in the policy. 10.23 GRPFLY3





## Questions about plan benefits?

Call +1.888.574.7026 or email  
[360Group@travelexinsurance.com](mailto:360Group@travelexinsurance.com),  
and reference Plan GPZ-1023.

### Trip cancellation & trip interruption

Protect travel investments and recover nonrefundable prepaid costs if your trip is canceled or interrupted for a covered reason. Popular covered reasons include:

- Sickness, injury, or death<sup>1</sup>
- Residence or destination uninhabitable
- Strike
- Inclement weather
- Cancel for business reasons
- Traffic accident en route
- Quarantine
- Jury duty/subpoena
- Military duty
- Financial insolvency<sup>2</sup>
- Terrorist incident
- Theft of passport/visa
- Involuntary termination

### Travel delay

Reimbursement for reasonable additional costs — such as accommodations, local transportation, and meals — if travel is delayed five hours or longer.

### Baggage & personal effects

Reimbursement for personal articles and expenses if bags are lost, stolen, or damaged.

### Baggage delay

Reimbursement for reasonable additional personal articles and expenses if bags are delayed for 12 hours or more.

### Emergency medical & dental expenses<sup>6</sup>

Emergency medical treatment if sickness or injury occurs while traveling.

### Emergency medical evacuation

Includes emergency medical evacuation to the nearest suitable medical facility, help returning home if medically necessary, and repatriation expenses.

### Accidental death & dismemberment

Reimbursement for permanent loss of life, limbs, or sight from a covered accidental injury during travel.

### Pre-existing medical condition exclusion waiver<sup>3</sup>

Pre-existing medical conditions are eligible for coverage when:

- The traveler is medically able to travel at the time of plan purchase
- The plan is purchased at or before the final trip payment

A pre-existing medical condition is an injury, sickness, or other condition (excluding any condition from which death ensues) of an insured, traveling companion, or family member traveling with the insured within the 60-day period immediately preceding the insured's plan purchase date.

### Plan details

View policy at [policy.travelexinsurance.com/GPZ-1023](http://policy.travelexinsurance.com/GPZ-1023)

Unless otherwise stated in the plan, this plan will not pay for any loss arising directly or indirectly out of, or as a result of, or from, or that occur to, or are as a result of the actions of the insured or the insured's family member, or traveling companion, or business partner for the following: suicide, attempted suicide, or intentionally self-inflicted injury, while sane or insane (while sane in CO and MO); mental, nervous, or psychological disorders; being under the influence of drugs or intoxicants, unless prescribed by a physician; normal pregnancy, resulting childbirth, and elective abortion; participation as a professional in athletics while on a covered trip; participation in organized amateur or interscholastic athletic or sports competition or related practice events; riding or driving in any motor competition; off-road driving, whether as a driver or as a passenger; declared or undeclared war, or any act of war; civil disorder; service in the armed forces of any country; nuclear reaction or radioactive contamination; operating or learning to operate any aircraft as pilot or crew; mountain climbing, bungee jumping, snow skiing, skydiving, parachuting, free falling, cliff diving, B.A.S.E. or base jumping, hang gliding, parasailing, extreme sports, or travel on any air-supported device other than on a regularly scheduled airline or air charter company; mountaineering where ropes or guides are commonly used, including ascending and descending a mountain requiring specialized equipment, including but not limited to anchors, bolts, carabiners, crampons, lead/top-rope anchoring equipment, and pick-axes; scuba diving, if the depth of the water exceeds 75 feet; the insured's commission of or attempt to commit a felony; elective medical or holistic treatment or procedures; failure of any tour operator, common carrier, other travel supplier, person, or agency to provide the bargained-for travel arrangements/services; a loss that results from a sickness, disease, or other condition, event, or circumstance that occurs at a time when this policy is not in effect for the insured; a diagnosed sickness (if insurance is purchased after such diagnosis) from which no recovery is expected and that only palliative treatment is provided and that carries a prognosis of death within 12 months of the effective date of the applicable coverage under this policy; sickness, injury, or death if the plan is purchased after entering a hospice facility or receiving hospice treatment; any trip taken outside the advice of a physician; or a pre-existing condition, including death, that results therefrom (within the stated look-back period within your insurance policy). Additionally, this plan will not pay for any loss arising directly or indirectly out of, or as a result of, or from, or that occur to, or are as a result of the actions of the following that occur to the insured: any amount paid or payable under any worker's compensation, disability benefit, or similar law; a loss or damage caused by detention, confiscation, or destruction by customs; or medical treatment during a covered trip or arising from a covered trip undertaken for the purpose or intent of securing medical treatment. The following additional exclusion applies to accidental death and dismemberment benefits: We will not pay for loss caused by or resulting from sickness of any kind. Please refer to your plan documents for a complete list of plan exclusions and limitations, as well as the definitions of capitalized terms used herein. The purchase of this product is not required in order to purchase any other travel product or service. Your travel retailer might not be licensed to sell travel insurance and will only be able to provide general information about the product. An unlicensed travel retailer may not answer questions about the terms and conditions of the insurance offered and may not evaluate the adequacy of your existing insurance coverage. The products offered provide insurance coverage that only applies during your covered trip. You may have insurance coverage from other sources that provides similar benefits but may be subject to different restrictions, depending on the coverage. You may wish to compare the terms of the travel policy offered through Travelex with any existing life, health, home, and automobile insurance policies you may have. If you have questions about your coverage under your existing insurance policies, contact your insurer or insurance agent or broker. Any inquiry regarding claims may be directed to Zurich Travel Assist at [claims@zurichtravellassist.com](mailto:claims@zurichtravellassist.com), P.O. Box 968019, Schaumburg, IL 60196-8019; +1.800.501.4781. Inquiries regarding new, existing, or denied claims, as well as any other claims questions, may also be directed to this address. Consumers in California may also contact the California Department of Insurance Hotline at +1.800.927.4357 or +1.213.897.8921. Travelex Insurance Services, Inc. CA Agency License #0D10209. Consumers in Maryland may contact the Maryland Insurance Administration at +1.800.492.6116 or +1.410.468.2340. Insurance coverages underwritten by Zurich American Insurance Company, a New York-domiciled company with its principal place of business at 1299 Zurich Way, Schaumburg, IL 60196 (NAIC # 16535). The terms and conditions of the policy described in this brief summary are governed by the individual policy document that contains the complete terms. In the event of any discrepancy between the information in this brief summary and the policy, the policy document shall govern. This is intended as a general description of certain types of insurance available to qualified customers and provided solely for informational purposes. Policy Form Series #U-TIIV-100-A CW, #U-TIIN-100/110-A CW, #U-TIGV-100-A CW, #U-TIGV-100-A CW; in DC #U-TIIV-100-A DC & #U-TIGV-100-A DC; in IN #U-TIIN-100/110-A IN & U-TIGV-100-A IN; in KS U-TIIN-110-A KS; in MN #U-TIIV-100-B MN & #U-TIGV-100-B MN; in MO U-TIIN-110-A MO; in MT #U-TIIN-100/110 MT & U-TIGV-100-A CW; in NH #U-TIIV-100-A NH; #U-TIIV-101-B NY, #U-TIIN-100 NY; in OR #U-TIIV-100-A OR; in VA #U-TIIV-100-A VA and #U-TIGV-100-A VA; in VT #U-TIIN-100/110-A VT. 10.23 GRPFLY3



Dream. Explore. Travel On.